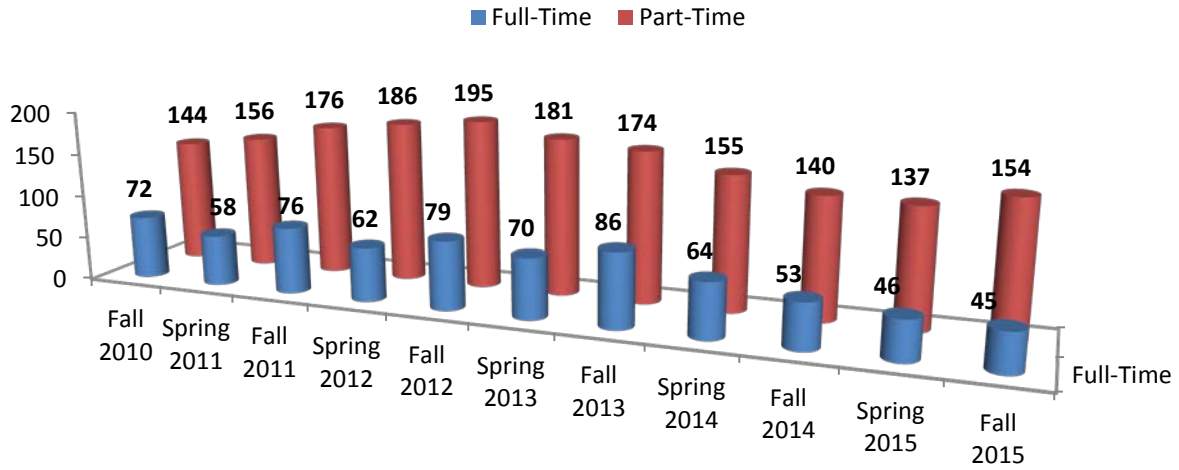


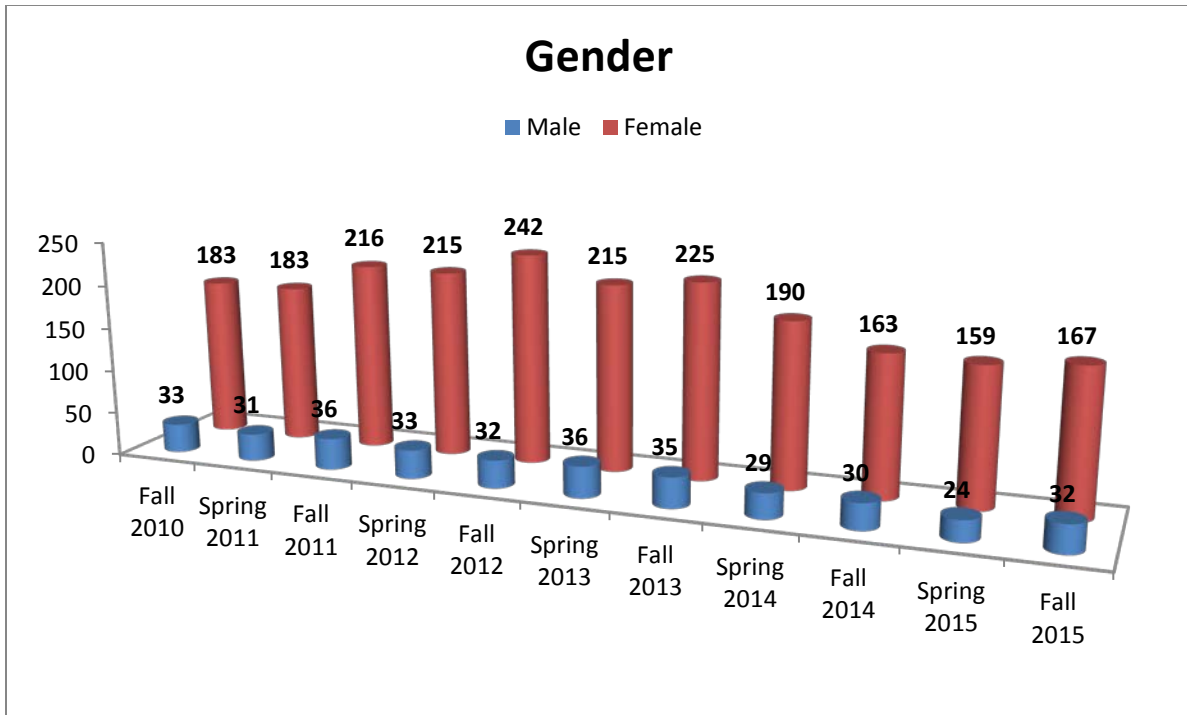
Population Attending Full-Time/Part-Time



Term	Full-Time	Part-Time
Fall 2006	47	99
Spring 2007	33	96
Fall 2007	67	83
Spring 2008	48	92
Fall 2008	55	97
Spring 2009	55	91
Fall 2009	77	112
Spring 2010	64	121
Fall 2010	72	144
Spring 2011	58	156
Fall 2011	76	176
Spring 2012	62	186
Fall 2012	79	195
Spring 2013	70	181
Fall 2013	86	174
Spring 2014	64	155
Fall 2014	53	140
Spring 2015	46	137
Fall 2015	45	154

Total Combined Population - Full-Time & Part-Time

SEMESTER	TOTAL
Fall 2006	146
Spring 2007	129
Fall 2007	150
Spring 2008	140
Fall 2008	152
Spring 2009	146
Fall 2009	189
Spring 2010	185
Fall 2010	216
Spring 2011	214
Fall 2011	252
Spring 2012	248
Fall 2012	274
Spring 2013	251
Fall 2013	260
Spring 2014	219
Fall 2014	193
Spring 2015	183
Fall 2015	199

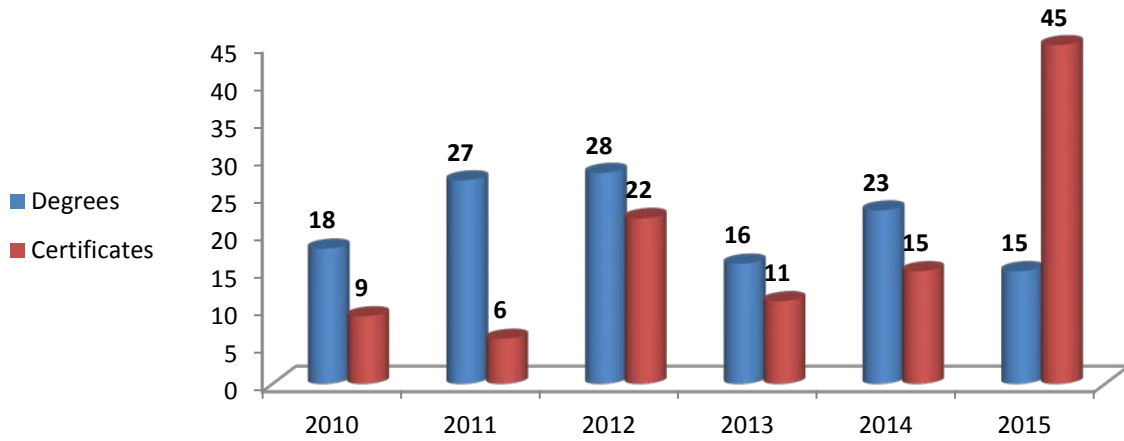


Term	Male	Female
Fall 2006	18	127
Spring 2007	16	113
Fall 2007	18	132
Spring 2008	18	122
Fall 2008	13	139
Spring 2009	13	133
Fall 2009	22	167
Spring 2010	22	163
Fall 2010	33	183
Spring 2011	31	183
Fall 2011	36	216
Spring 2012	33	215
Fall 2012	32	242
Spring 2013	36	215
Fall 2013	35	225
Spring 2014	29	190
Fall 2014	30	163
Spring 2015	24	159
Fall 2015	32	167

Total Combined Gender - Male and Female

SEMESTER	TOTAL
Fall 2006	146
Spring 2007	129
Fall 2007	150
Spring 2008	140
Fall 2008	152
Spring 2009	146
Fall 2009	189
Spring 2010	185
Fall 2010	216
Spring 2011	214
Fall 2011	252
Spring 2012	248
Fall 2012	274
Spring 2013	251
Fall 2013	260
Spring 2014	219
Fall 2014	193
Spring 2015	183
Fall 2015	199

Number of Human Services Students Completing Program Per Academic Year

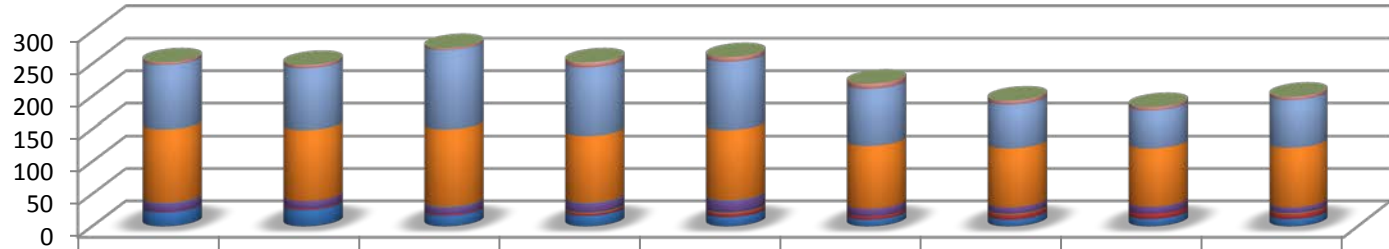


AWARD DATA		
Year	Degrees	Certificates
2006	11	6
2007	16	7
2008	15	8
2009	8	4
2010	18	9
2011	27	6
2012	28	22
2013	16	11
2014	23	15
2015	15	45

AGE DATA

Term	<18	18-19	20-24	25-29	30-39	40-49	50-59	60+
Fall 2006	4	24	35	17	29	23	12	1
Spring 2007	0	14	30	17	30	26	10	2
Fall 2007	4	17	40	17	35	26	9	2
Spring 2008	0	19	39	15	33	26	6	2
Fall 2008	2	25	40	15	30	33	3	4
Spring 2009	0	26	39	18	30	21	8	4
Fall 2009	3	40	47	26	33	24	11	5
Spring 2010	1	34	47	27	36	25	10	5
Fall 2010	2	31	54	33	47	35	10	4
Spring 2011	1	21	60	27	62	28	13	2
Fall 2011	3	30	72	37	58	35	15	2
Spring 2012	1	23	63	26	72	44	16	3
Fall 2012	2	24	70	42	64	48	20	4
Spring 2013	0	20	62	35	57	52	22	3
Fall 2013	8	22	47	35	63	57	21	7
Spring 2014	4	26	42	31	50	49	14	3
Fall 2014	8	18	35	29	39	41	21	2
Spring 2015	1	21	34	30	41	34	19	3
Fall 2015	5	27	34	28	39	35	24	7

Race/Ethnicity



	Fall 2011	Spring 2012	Fall 2012	Spring 2013	Fall 2013	Spring 2014	Fall 2014	Spring 2015	Fall 2015
Native Hawaiian/Pacific Islander	0	0	0	1	0	0	0	0	0
Asian	4	5	3	7	7	8	6	5	5
Black/African American	99	95	122	105	105	87	67	58	73
White	113	109	119	103	108	97	91	90	92
Non US Citizen	1	0	1	1	1	0	0	0	0
Hispanic/Latino	13	12	11	14	18	12	10	11	9
American Indian/Alaska Native	0	0	0	1	1	0	1	0	1
Other/Multi-Race	1	2	2	4	6	5	8	8	8
Unreported	21	25	16	16	14	10	10	11	11

RACE DATA

	FA2006	SP2007	FA2007	SP2008	FA2008	SP2009	FA2009	SP2010	FA2010	SP2011	FA2011	SP2012	FA2012	SP2013	FA2013	SP2014	FA2014	SP2015	FA2015
Unreported	17	12	12	12	22	14	26	24	24	16	21	25	16	16	14	10	10	11	11
Other/Multi-Race	1	2	0	1	2	1	2	2	2	2	1	2	2	4	6	5	8	8	8
American Indian/Alaska Native	2	1	0	0	0	0	0	0	1	0	0	0	0	1	1	0	1	0	1
Hispanic/Latino	2	2	2	3	2	4	7	7	8	6	13	12	11	14	18	12	10	11	9
Non US Citizen	0	0	1	2	0	0	0	0	0	0	1	0	1	1	1	0	0	0	0
White	70	63	82	80	83	78	98	92	101	104	113	109	119	103	108	97	91	90	92
Black/African American	51	49	53	42	43	48	54	58	77	81	99	95	122	105	105	87	67	58	73
Asian/Pacific Islander*	2	0	0	0	0	1	2	2	3	5	N/A	N/A	N/A	N/A	N/A	N/A	N/A	N/A	N/A
Asian											4	5	3	7	7	8	6	5	5
Native Hawaiian/Pacific Islander											0	0	0	1	0	0	0	0	0

*Beginning in 2011 Asian and Hawaiian Pacific Islander were reported separately